




**151/158-166 Day Street (289-295 Sussex Street)
SYDNEY**

Large Two-Bedroom Apartment - 129 Square Metres Total

2  2  1 

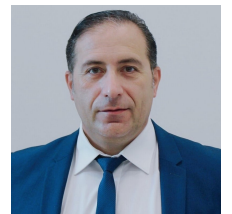
Price : \$ 1,070,000

Office Address : Ground floor, 299 Sussex Street Sydney

Phone : 9056 0808



Evon Shi
0404808310



Jim Triantos
0424808189



Please meet the agent at the Day Street entry

This large apartment located at the iconic Millennium Towers offers spacious living and dining areas, with direct access to a private sunny balcony overlooking the Darling Quarter, W Hotel Sydney and Fireworks.

Optimal City living - Darling Harbour, International Convention Centre and ICC Sydney Theatre right across from the Day Street building entrance, 200 metres to Town Hall station, perfectly located within the heart of Sydney's central district.

Full brick construction, ideal low-maintenance city residence or sound investment in an area with consistently strong demand.

Strata plan size: 129 square metres total (internal 113 sqm plus lock up garage 16 sqm)

- Spacious bedrooms with double windows and built-in wardrobes
- Master bedroom with ensuite, including bath and separate shower
- Modern granite benchtops kitchen with Miele gas cooktop and dishwasher
- Freshly painted with floating floor board throughout the apartment
- Air conditioning and internal laundry with dryer
- Lock-up security garage with 24-hour concierge/security
- Facilities: Heated lap pool, gym, sauna, spa and games room.

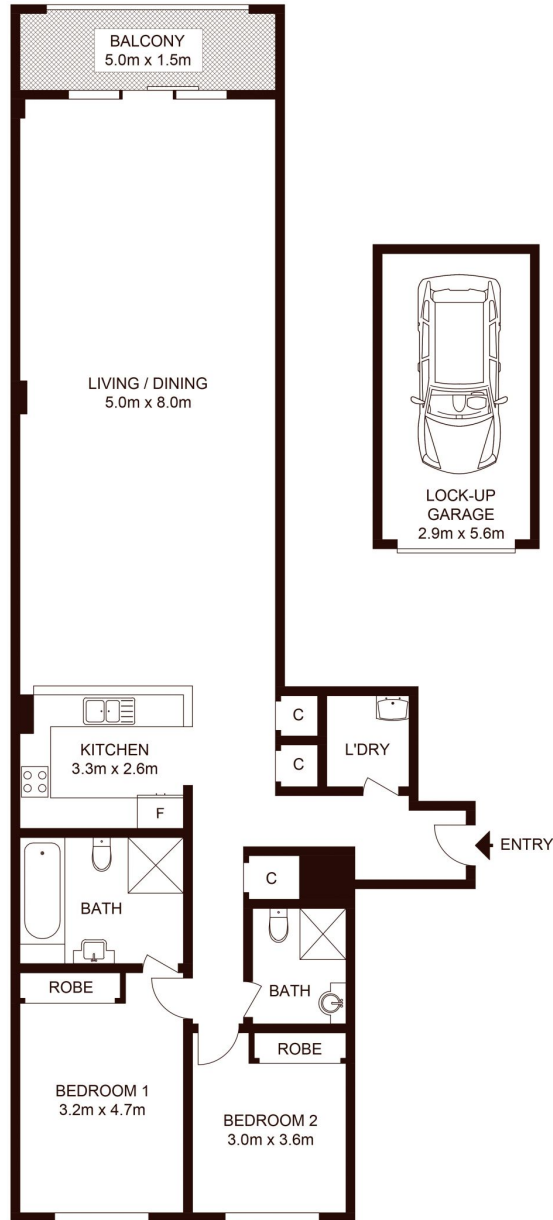
Walking distance to Cockle Bay Wharf, Darling Quarter, Barangaroo, Town Hall and World Square. Convenient location provides immediate access to an array of exciting entertainment and shopping choices.

Approx Outgoing:

Strata: \$2114.64 per quarter (If paid before due date), Council: \$331 per quarter, Water: \$179.90 per quarter

Strata report link: <https://beforeyoubuy.com.au/reports/unit-151-158-166-day-street-sydney-nsw-2000/strata>

Please contact Evon Shi at 0404 808 310 or Jim Triantos at 0424 808 189 for further information



151/158-166 Day Street, SYDNEY

Not to scale • All measurements are approximate • Drawn for marketing purposes only • Floorplan by © Xorix Media

